

Head Office:
Dixon Kelley Estate Agents
1 Penn Court
Station Road, West Moors
Dorset. BH22 0JJ

HAMPSHIRE PARK HOMES

DRAFT

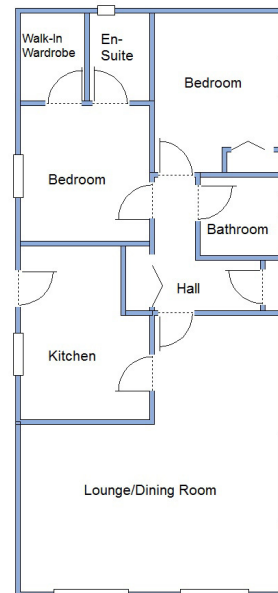
www.hampshireparkhomes.com

Telephone: 01202 877511

58 Westwood Park, Bashley Cross Road, Bashley, New Milton. BH25 5TA



New Home—Sited & Ready for Early Occupation!



This drawing has been prepared for diagrammatic purpose only. Not to scale

2 Bedroom Park Home approx 40' x 19'6"

Accommodation & approximate room dimensions:

- Prestige Sonata
- Entrance Hall: Cloaks & Linen cupboard.
- Kitchen: approx 12'2" x 9'. Range of floor cupboards. Built-in oven, hob & hood. Integrated fridge/freezer, washing machine & dishwasher. Cupboard housing combination gas boiler.
- Lounge/Dining Room: approx 19'5" x 18'5" max overall measurement. Feature fireplace.
- Bedroom 1: approx 9'6" x 9' Plus walk-in wardrobe
- En-Suite Shower Room
- Bedroom 2: approx 11'2" x 8'9". Built in wardrobe.
- Bathroom: Panelled bath, vanity wash basin & WC.
- Gas Central Heating (system untested)
- PVCu Double-Glazing
- Fully Furnished
- Parking on Plot
- Garden with lawn
- Age Restriction 55+
- Pets Considered
- Popular Residential Park with direct access to protected wooded walks.

Stylish Interior & Fully Furnished



Additional Photographs at www.hampshireparkhomes.com

Price £255,000

Pitch Fee approx £tbc per calendar month

VIEWING STRICTLY BY APPOINTMENT WITH THE VENDOR'S AGENT Dorset Park Homes 01202 877511

IMPORTANT NOTE: These particulars are believed to be correct but their accuracy is not guaranteed. They do not form part of any contract. Nothing in these particulars shall be deemed to be a statement that the property is in good structural condition or otherwise, nor that any of the services, appliances, equipment or facilities are in good working order or have been tested. Purchasers should satisfy themselves on such matters prior to purchase Ref.W04013

The recommended specialist in Park Home sales
Proprietor: Simon Dixon

